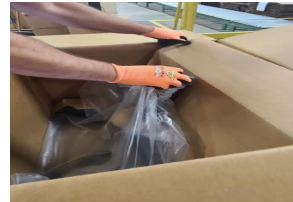


KND ASSEMBLY INSTRUCTIONS

Tools Needed: Box Cutter



1. Open carton with box cutter.
Pull base along with the base insert out.
Set base on the floor.



2. Remove chair from carton.
Remove bag and bubble wrap cover.
DO NOT use box cutter on bag!



3. Remove cylinder from insert.
Remove cylinder from bag.
Set cylinder in the base insert.



4. Place chair on its side on top of a padded low table as shown.
Insert cylinder assembly into control.



5. Carefully hold assembly together while placing the chair in its upright position.



6. Adjust the cylinder down and up to ensure the cylinder is securely in the control insert.
You're now ready to enjoy your chair!



carolina
an OFS company